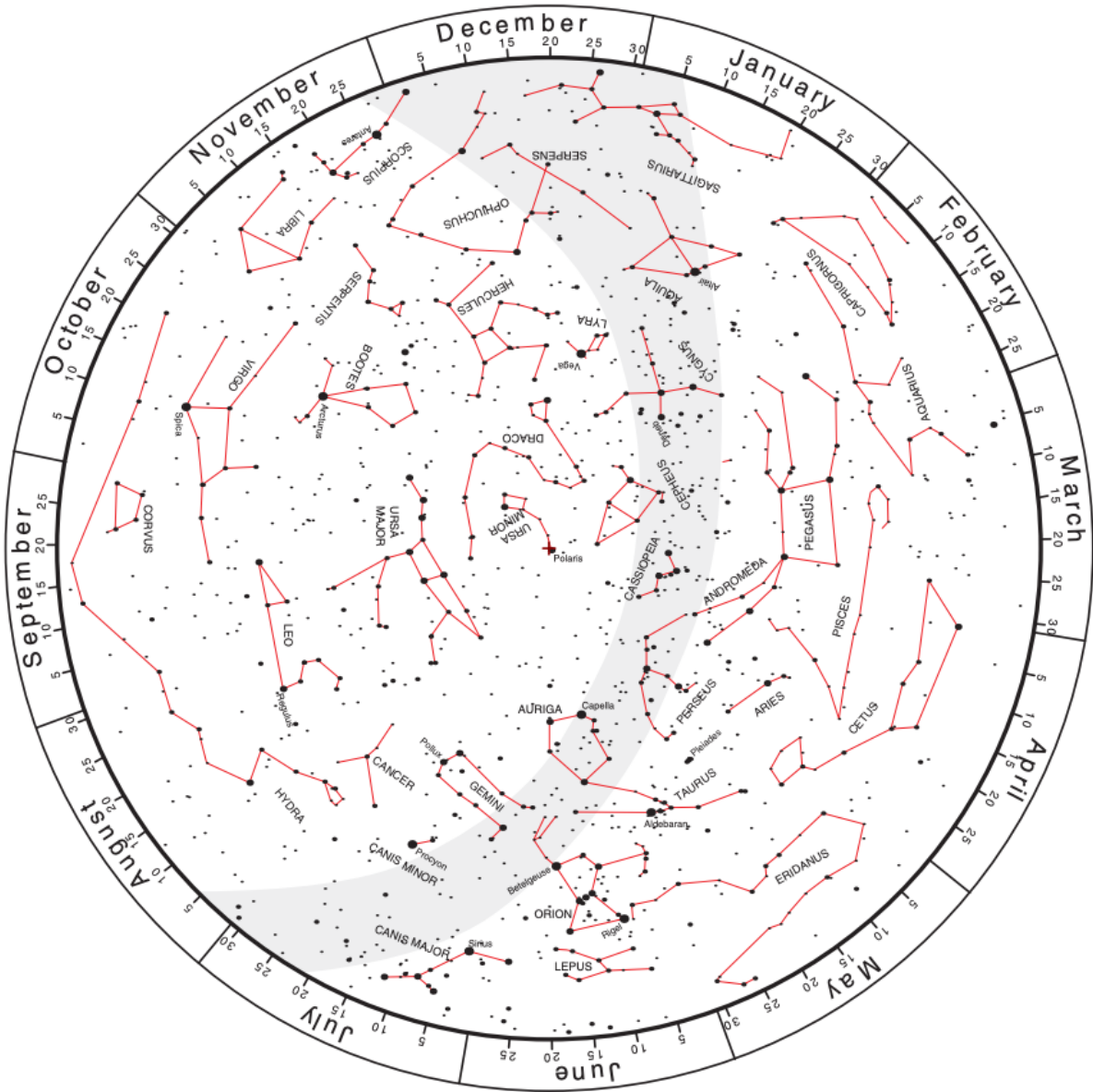
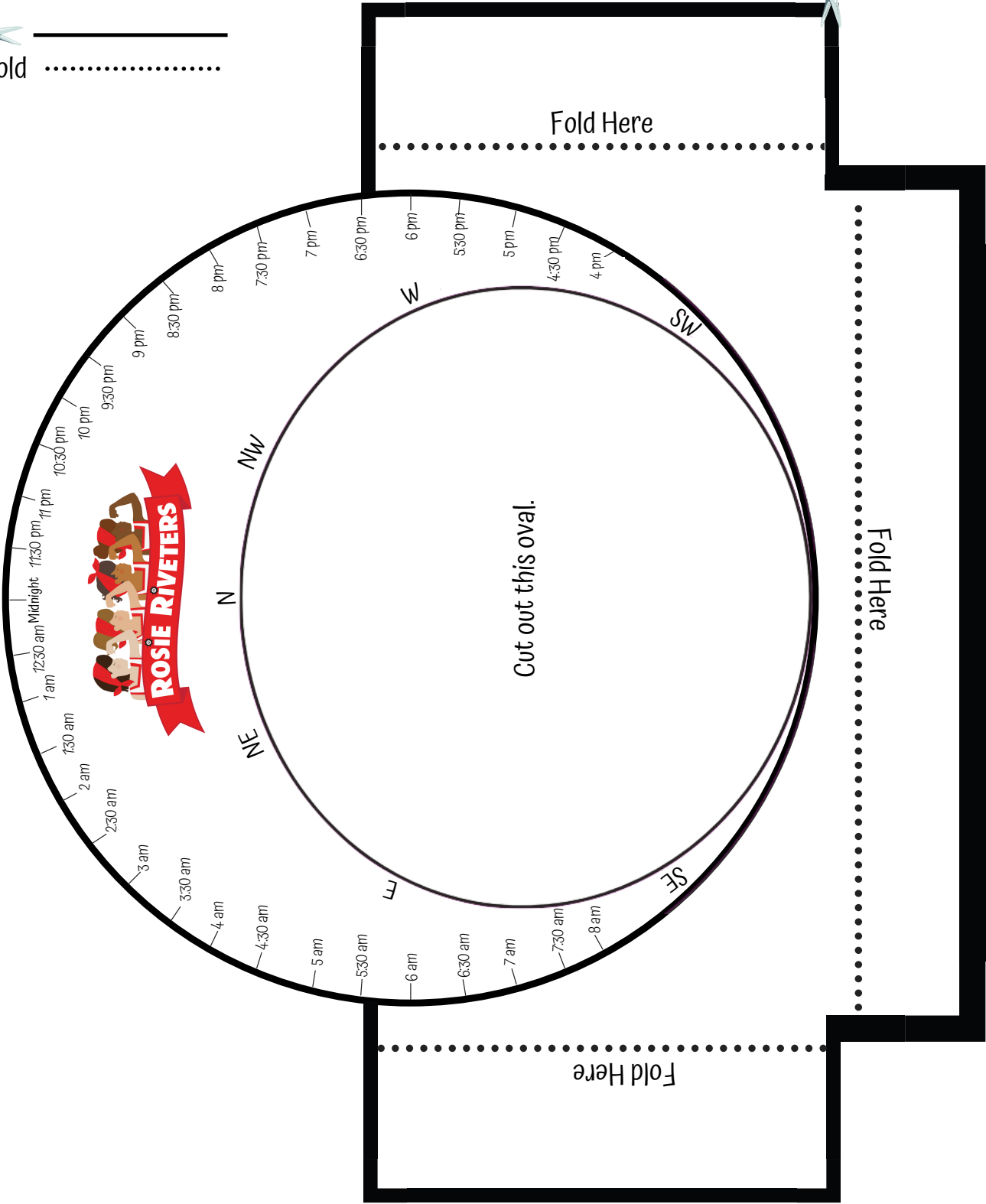
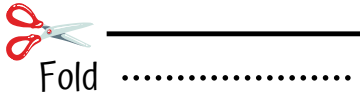


Star Map



Cut out the star map.

Planisphere



To Use: Place the star map into the planisphere pocket. Identify North using a compass. Stand facing South. Hold the planisphere so that North is facing you. Rotate the star map to line up the date and the time to the day you are outside.

Bonus: If you hold the planisphere above your head you'll see stars placement in the sky!

Note: March - October you'll need to deduct an hour from the outlined times.