



Art Bots



Secure the cork to the motor by pressing the center of its base onto the motor shaft.



Reinforce the connection of the cables to the motor with electrical tape. It is important to limit the friction on this connection to help the cables stay connected to the motor.



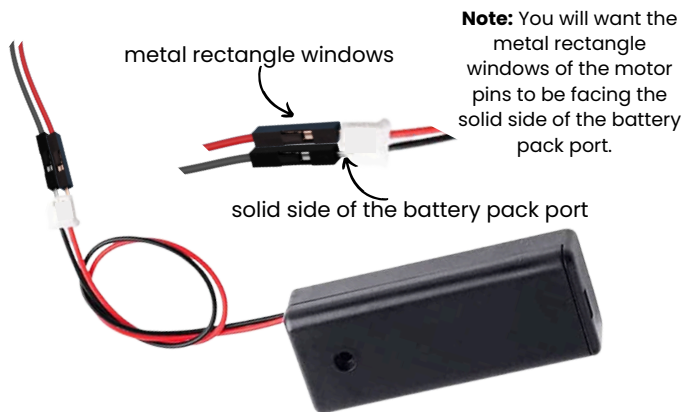
Thread the black and red wires from the motor through the holes in the base of the cup, so the wires are hanging inside of the cup.



Slide open the batter holder by pushing the three lines towards the smallest line on the side opposite the On/Off switch. Be sure the batteries are facing the correct direction by matching the + and - symbols on the batteries to the + and - symbols printed on the inside of the battery pack.



Art Bots



Make sure the battery pack is switched to OFF. Connect the RED cable from the motor to the RED cable from the battery pack. Repeat this process with the BLACK wires.

Secure the connection of the motor wires and battery pack wires with electrical tape.



Attached a piece of 3M double sided mounting tape to the side of the battery pack without the On/Off switch.



Secure the battery pack to the inside wall of the cup using the other side of the 3M double sided mounting tape.



Art Bots



Attach a piece of 3M double sided tape to either end of the bottom of the motor.
Be sure to not cover the motor shaft (small pin in the center of the motor).



Secure your choice of markers to the outside of the cup. The goal is for the cup to be able to stand up with the markers supporting the cup as legs. Let your creativity fly!



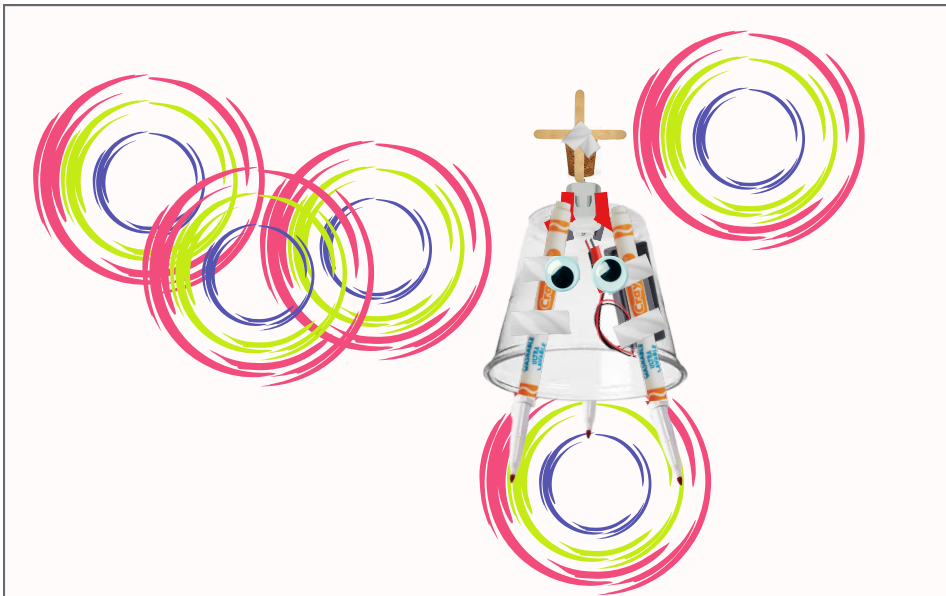
Secure the motor to the top center of the cup using the other side of the 3M double sided mounting tape. Add additional electrical tape to reinforce the connection. NOTE: Be sure not to tape the cork to the motor or to tape over the shaft in the center of the motor.



Rosie Riveters
STEM CONFIDENCE

Art Bots

Secure your choice of different arrangements of mini popsicle sticks to the cork using electrical tape. Be sure not to tape the cork to the motor as this will stop the motor shaft from rotating.



Grab a piece of cardboard, remove the caps from the markers, move the switch to "On", place your Art Bot on to the cardboard and observe!