



Biomechanical Hand

STEP 1



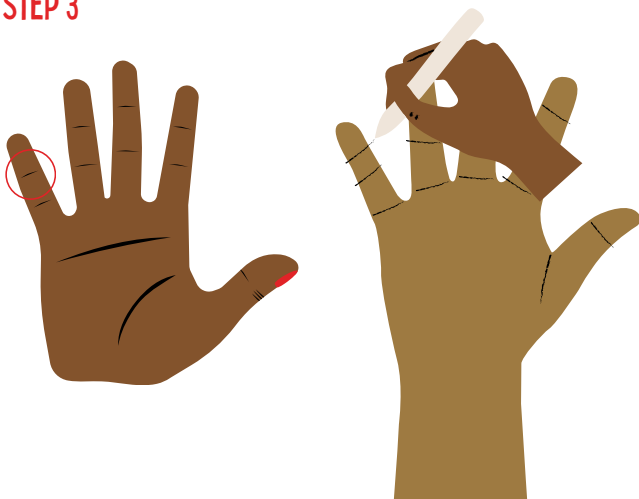
Trace the outline of your entire hand onto the cardboard with the pencil and be sure to include some of your wrist.

STEP 2



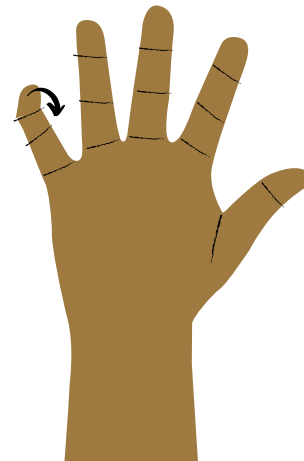
Use your scissors to cut out your cardboard hand along the lines you traced.

STEP 3



Mark the placement of the bones and joints that bend on each finger.

STEP 4

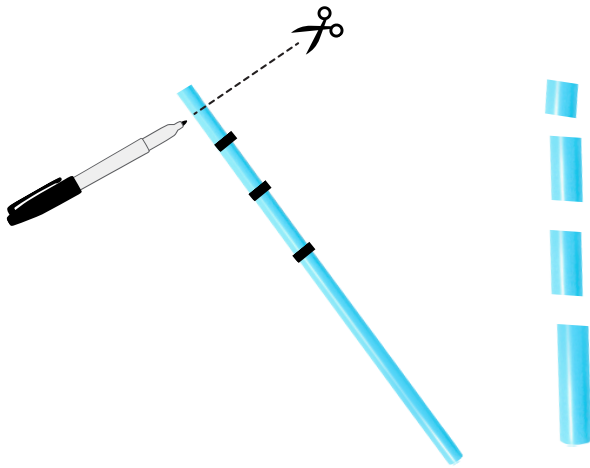


Bend the cardboard along the lines of each finger joint.



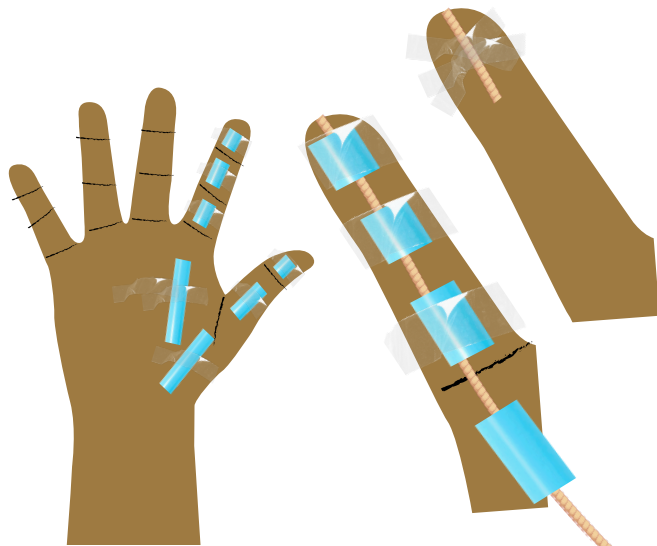
Biomechanical Hand

STEP 5



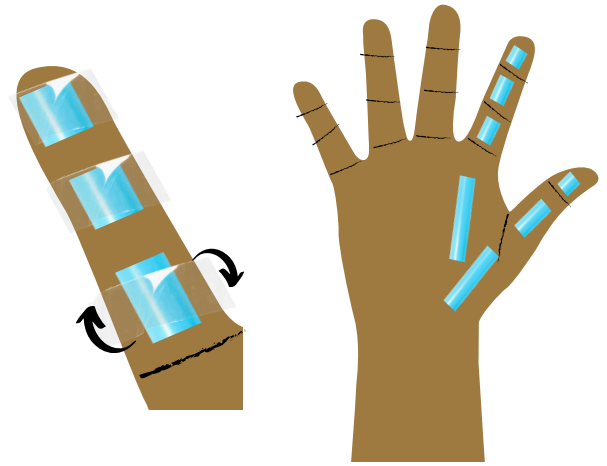
Measure and mark the correct size "bones" on the straw. Note the bones should not touch each other when placed on your hand. Cut four pieces of straw for each finger (three bones for the finger and one bone for the hand).

STEP 7

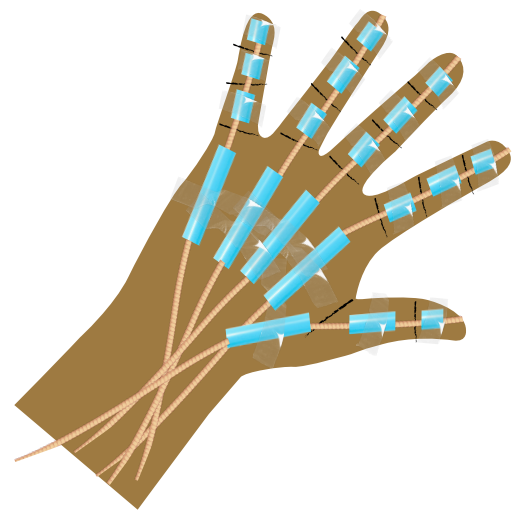


Attach a piece of string to the top back of each finger with tape and thread it down through the corresponding straws

STEP 6



Attach the straw tubes to the cardboard where you marked the placement of your bones by wrapping the tape around the "bone" and the cardboard. Be sure to leave the bended joints "open" and not to cover the hole of the straw/"bone" with tape.



It is okay to not finish the whole hand in the time that you have. The goal is to get 1 or 2 fingers complete.